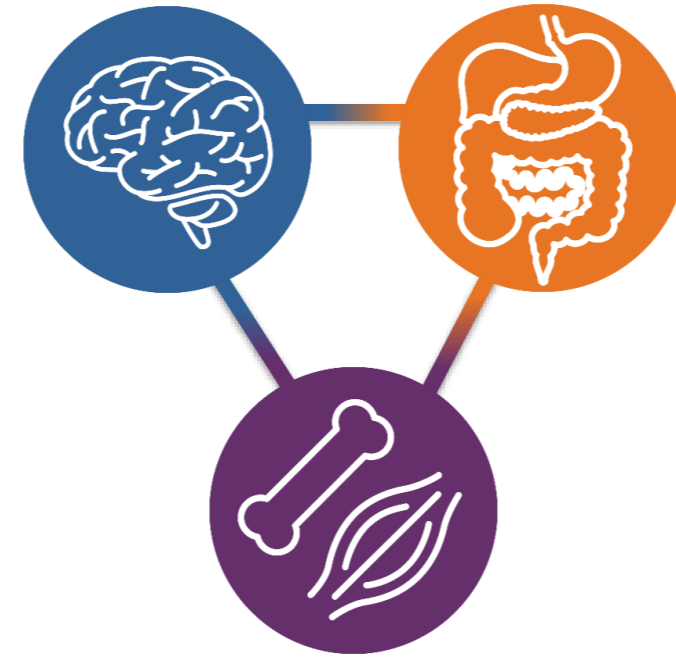


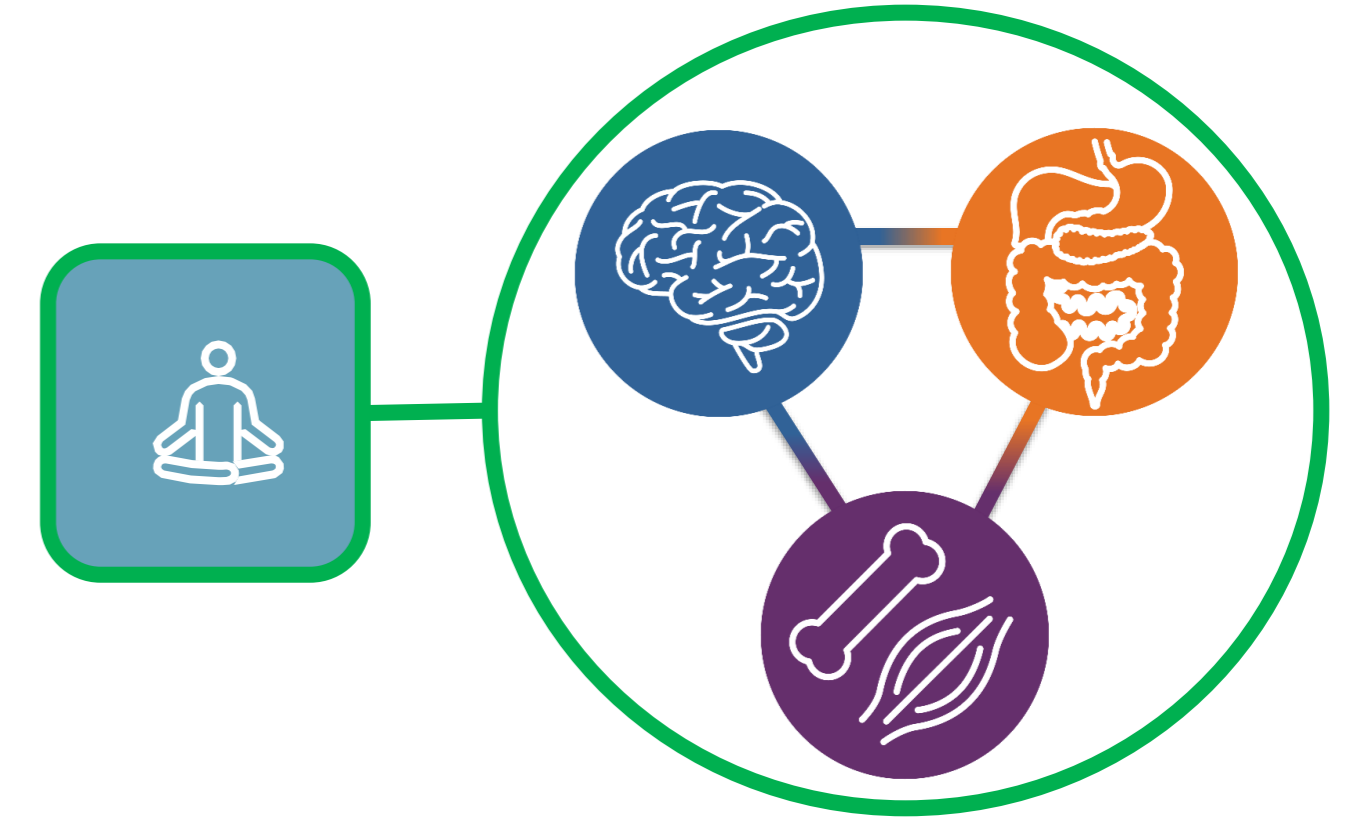
Methodological Approaches for Whole Person Research



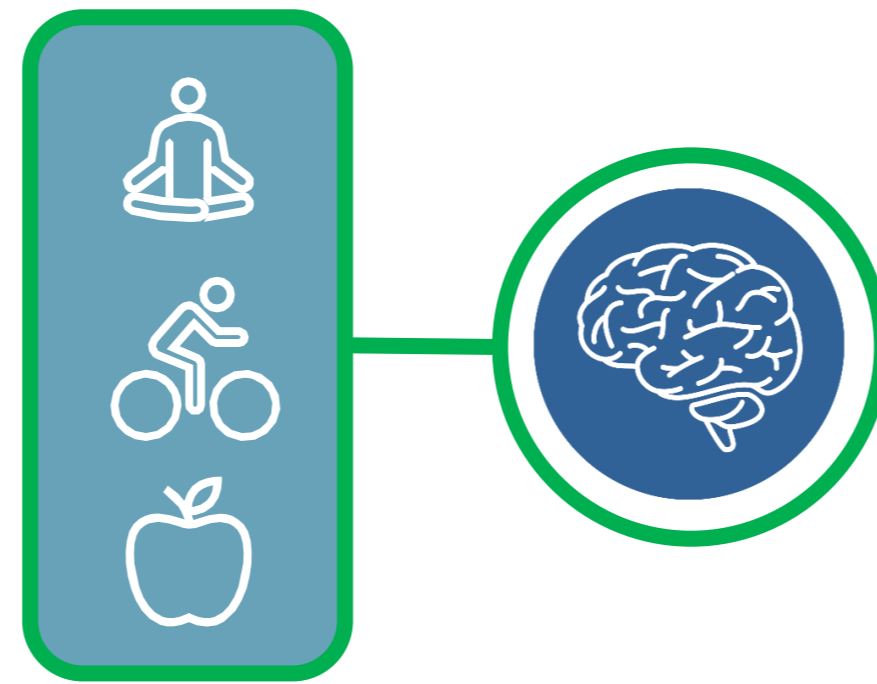
Session 1: How To Study Interconnected Systems: Observational Studies



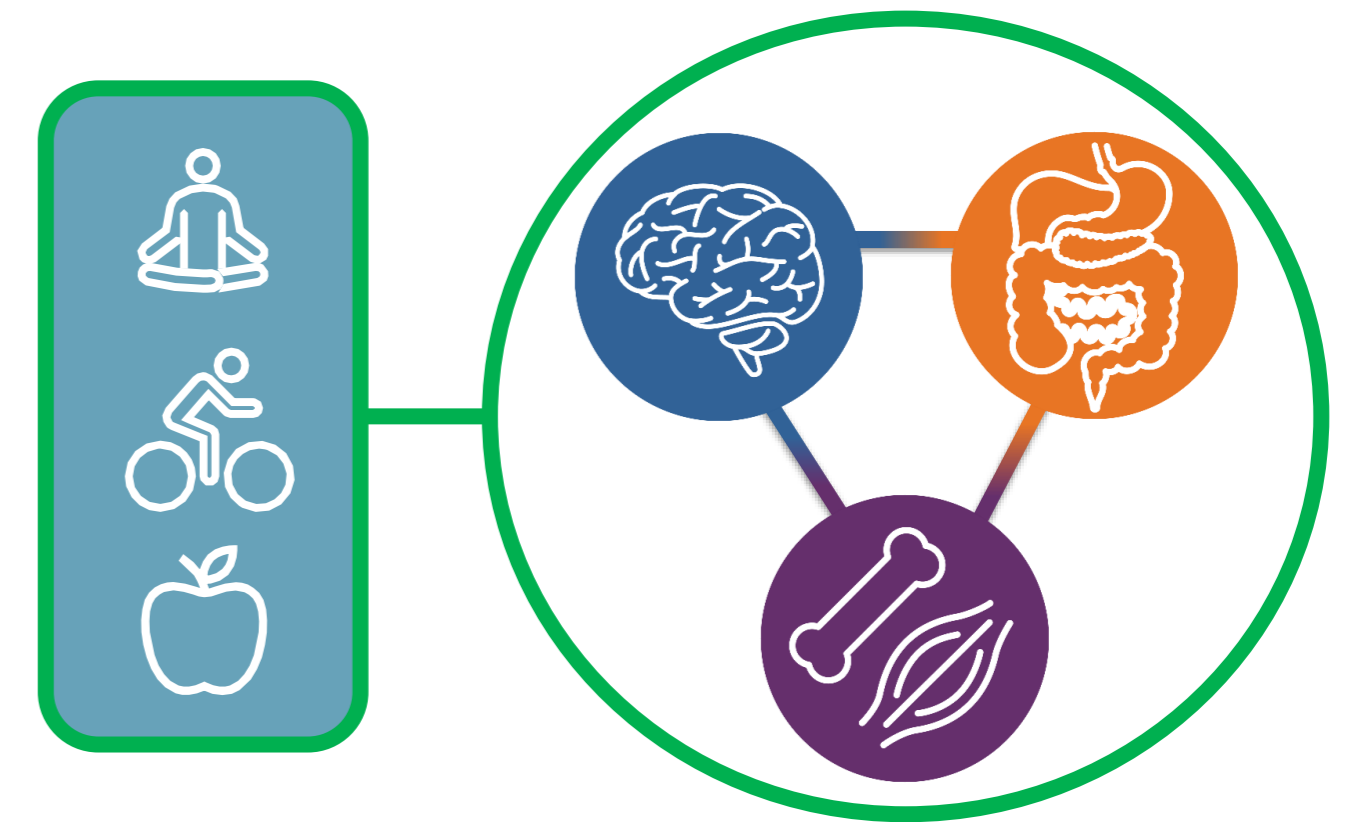
Session 2: How to Study the Impact of Single Component Interventions or Manipulation on Multiple Interconnected Systems



Session 3: How To Investigate the Impact of Multicomponent Interventions or Therapeutic Systems on a Single Outcome



Session 4: How To Examine the Impact of Complex Multicomponent Interventions on Multisystem or Multiorgan Outcomes



Potential Intervention



Organs/System

